

Engine

Cummins QSG 12,Tier 4 final / Stage IV

Gross Power

276 kW (370 hp) @ 2,100 rpm

Operating Weight

30,000 – 31,900 kg

Bucket Capacity

4.5 – 9.0 m³

890H
WHEEL LOADER



TOUGH WORLD. TOUGH EQUIPMENT.

A POWERFUL VISION

Today, **LiuGong is a leader in China's construction equipment industry and is one of the fastest growing construction equipment companies in the world**, providing customers with quality, reliable support across a wide range of equipment.



WHAT MAKES LIUGONG A LEADER?

Innovation and manufacturing excellence for almost 60 years

LiuGong built China's first modern wheel loader and continues to embrace its commitment to innovation by combining decades of know-how with leading technology from the world's best component suppliers.

LiuGong has established centers of excellence around the globe to guarantee service and support and ensure their customers can work efficiently and

productively. LiuGong manufacture at 20 plants and have offices across all major regions of the world including Europe, North America, South America, Asia-Pacific, India, the Middle-East, South Africa and Russia.

An extensive network of regional parts depots operate around the globe to ensure customers receive the support they have come to expect from LiuGong.

INNOVATIVE FROM THE START

Innovation drives industries forward and LiuGong has been **driving innovation for nearly 60 years**.

An 110,000m² Global Research & Development Centre in Liuzhou, China is equipped with world-class technology and run by industry experts including around 1,000 R&D engineers.

In addition to the Liuzhou facility LiuGong operates world-class R&D facilities in Poland, India, the United States and the United Kingdom, supporting their global vision of excellence.

Emphasis on quality is reflected in LiuGong's Six Sigma quality methodology and compliance with ISO 9000 standards.

LiuGong has established joint venture partnerships with some of the industry's best known names including:

- German drivetrain components manufacturer **ZF Friedrichshafen AG**
- Finnish mining and aggregates processing equipment manufacturer **Metso**
- North American diesel engine manufacturer **Cummins**

WE ARE LIUGONG




8,000+
Employees


20
Factories


10
Global offices


2,650+
Sales outlets


1,000+
R&D engineers


5
R&D facilities


9
Regional parts depots


Nearly 60
Years' experience

DESIGNED TO GET MORE DONE

The new 890H is a **highly productive** partner on the jobsite. It boasts a redesigned Z-bar and bucket, an advanced load-sensing hydraulic system and a **responsive** powershift transmission that ensures fast cycle times.

DEPENDABLE POWER

The 890H benefits from the unmatched performance of the 270 kW (370 Hp) Cummins QSG 12 Tier 4 Final engine that not only maximizes torque output delivering more power at lower engine speeds, it also delivers fast throttle response.

TRANSMISSION

The ZF transmission with gears powershift of forward 4 and reverse 3 performs great speed acceleration even on slopes. Optimized gear ratios and auto-shift functionality provide faster acceleration and responsive cycle times, regardless of the application.

Conveniently located controls provide full command of loader and transmission functions for optimum work efficiency. Kick-down and forward/reverse buttons are conveniently located on the loader joystick. The kick-down function enables the operator to lower the gear with the tip of a finger, increasing engine torque and delivering increased bucket breakout force and improved loading capability.



LOAD-SENSING HYDRAULICS

Where intelligence meets brute force. The load-sensing hydraulic system directs power to the bucket or steering function according to demand, thus ensuring fast response and excellent efficiency. Smooth and superior control of the machine, boom and the attachment is easily achieved. The operator is in full control as power is efficiently distributed to meet the requirements of the job at hand.

RIDE CONTROL

LiuGong's new generation ride control, coupled with an automated bucket positioning feature, absorbs shocks and improves ride quality over any terrain. The improved ride ensures material is retained in the bucket and helps improve all round operator comfort, confidence and productivity.

Z-BAR LINKAGE TO SUPPORT PAYLOAD PERFORMANCE

The optimized Z-Bar geometry positions the bucket closer to the tires, achieving superior digging force, high bucket breakout force and maximum angle rollback for stable transport of materials with minimal spillage.

The option of a hydraulic quick coupler attachment adds to the versatility of this machine, allowing for the use of multiple tools and attachments to suit the job at hand.

AXLES

The 890H features hydraulic lock differential axles that automatically deliver power to the wheels, creating excellent traction and virtually eliminating slippage even when operating in soft or uneven ground conditions.

These axles are designed to ensure all four wheels remain on the ground even in rough terrain. The front axle is rigidly-mounted to the frame to support the entire weight of the wheel loader and the rear axle is designed to allow for $\pm 11^\circ$ oscillation, delivering greatly enhanced stability and traction.

NEW BUCKET DESIGN FOR BETTER PAYLOAD CONTROL

The bucket on the newly designed 890H wheel loader has increased capacity and material holding ability. The 890H loads more easily and carries a larger payload, ensuring every cycle is your most productive.

OPERATOR FRIENDLY ENVIRONMENT

A comfortable operator is a more productive operator. The ergonomically designed controls, increased visibility and many convenience features in the cab of the 890H ensure long comfortable and productive days on the jobsite.





ENGINEERED FOR EFFICIENCY

The new 890H wheel loader not only works **harder** it works **smarter**. With integrated advanced technologies and rugged design, the 890H strikes the perfect balance between **fuel efficiency** and worksite productivity.

FUEL WISE 6 CYLINDER ENGINE

The six cylinder, four stroke Cummins QSG 12 turbocharged and inter-cooled engine achieves Tier 4F/Stage IV emission regulations without compromising on power and strength. From air intake to exhaust after treatment using optimized NOx and Dual Reduction Technology (EGR+SCR) this engine delivers for the environment and your business bottom line.

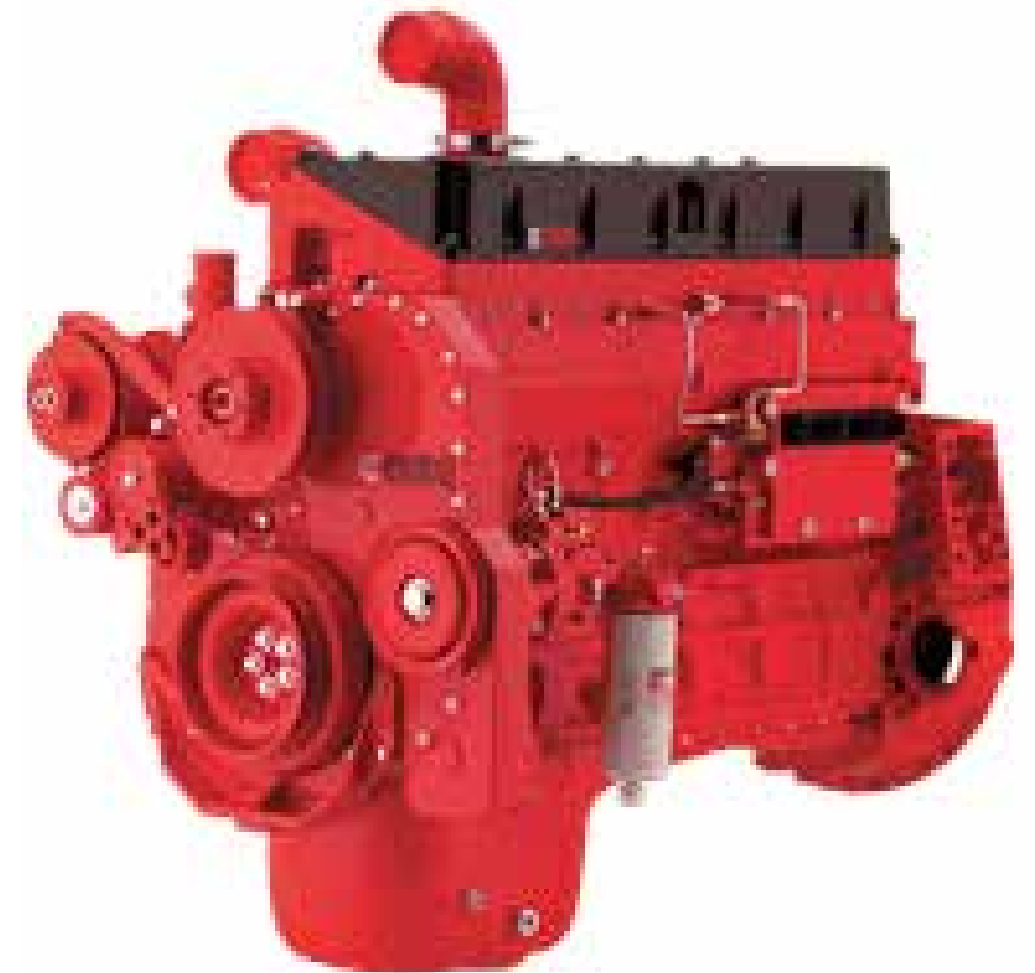
LOAD SENSING HYDRAULIC SYSTEM FOR OPTIMAL CONTROL

LiuGong's new-generation, hydraulic system ensures the mechanical, electrical and hydraulic systems work in perfect harmony. This technology ensures a perfect

match of hydraulic flow to the job at hand and power is only supplied when needed, ensuring optimal efficiency.

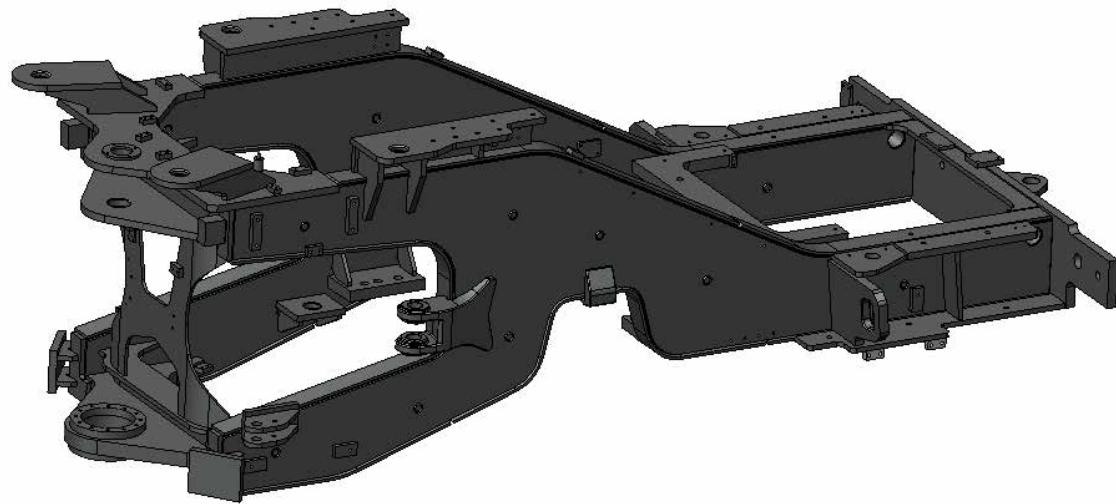
KEEP IT COOL

The cooling system has been totally redesigned providing better cooling and reduced noise. The new 6 mm hexagon grill design improves ventilation and a reversible hydraulic fan enables periodic radiator clean-out reducing the power required to operate the cooling system fan.



TOUGH & RELIABLE STRUCTURES

At every stage of design, LiuGong is committed to the principles of **reliability and durability**. This is evident in the 890H, making this new wheel loader a **smart choice** for those looking for low cost of ownership and peace of mind.

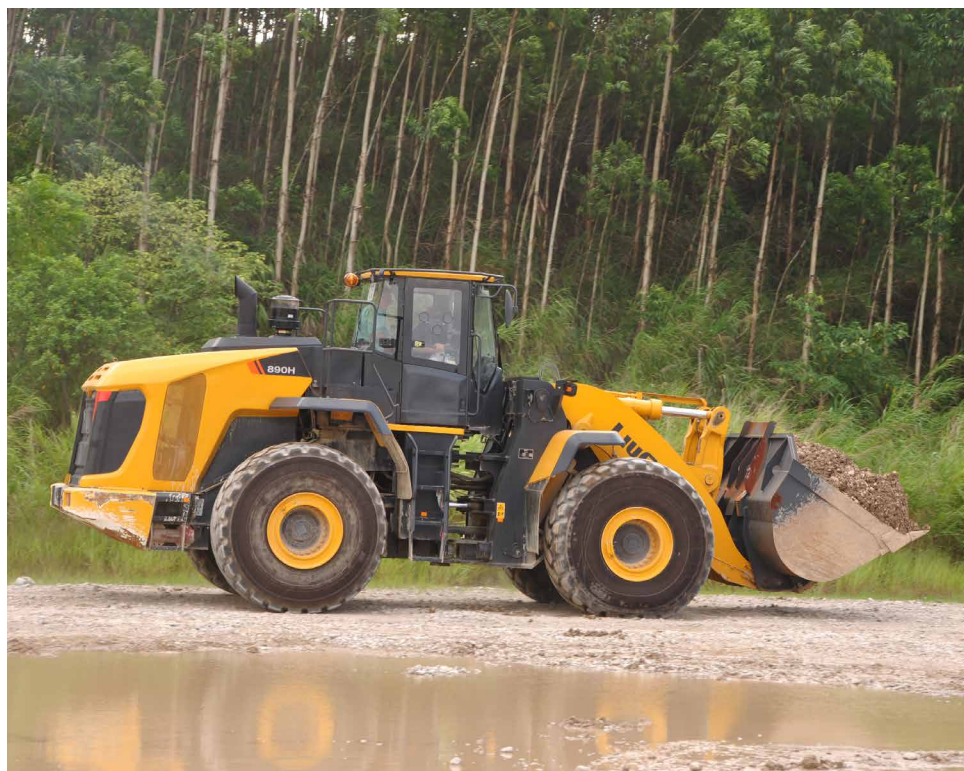


ENHANCED STRUCTURES

The chassis frame is the wheel loader's backbone. Particular care has been given to the design of this crucial structural component. Advanced analysis tools, including dynamics and durability simulations have been utilized to ensure the machine is able to absorb all the force, while preventing torsion and twisting and protecting the driveline.

Z-BAR LINKAGE REINVENTED

The newly designed Z-bar takes the full force of the payload and needs to deliver not only strength but clear visibility to the worksite. On the 890H, the Z-bar linkage has been redesigned for improved distribution of stress loads and key components such as hinge pins and lift arm mounting plates have been cast from materials specially heat treated, for increased strength.



World-class components deliver maximum reliability and durability in every machine.

PROVEN ENGINE

The engine is the heart of the wheel loader and essential to performance over the life of the machine. The Cummins QSG 12 engine is well known in the industry having worked millions of hours of operation across hundreds of thousands of worksites. When designed into a LiuGong machine, this engine endures 30,000 hours of rigorous LiuGong field testing to ensure the proven quality and reliability of every machine.

LOW MAINTENANCE BRAKE SYSTEM

In-axle hydraulic brakes isolate the components from the external environment, ensuring a long working life and easy maintenance. The new lubrication system is designed to deliver better brake performance and dramatically reduce tire wear.

AN ENVIRONMENT DESIGNED FOR WORK

Ergonomically designed controls, a roomy cab, clear **visibility** and convenient features all contribute to operator comfort and overall **productivity** on the jobsite.

SEE BETTER, WORK BETTER

The new 890H is designed to offer maximum visibility for safe and efficient operation. A panoramic view is made possible by the cabs curved front glass

and well positioned lift arms. The operator has a clear line of sight to the bucket edge at ground level and exceptional views of

the machine corners. The 890H also comes with an optional rear-view camera to help keep an extra eye on the jobsite.

WORK IN COMFORT

The spacious cab of the 890H maximizes operating space and provides a comfortable work area for the operator.

The vertically and horizontally adjustable air suspension seat ensures the operator can work long days in comfort and with less fatigue.

Sound and vibration levels inside the cab are a low 75dB (A) thanks to the high quality sealing, quieter electrical system and efficient cooling compartment.

PRECISE COMMAND & CONTROL

For easy operation, finger control levers give the operator simultaneous and precise control. Forward and reverse shifting and kick-down functions are ergonomically positioned for easy operator use, improving productivity and reducing operator fatigue.

FRESH AIR ALWAYS

The new 890H cab is designed with balanced air recycling ventilation to achieve positive pressure and continuous fresh air inside the cab. The air conditioning system is equipped with eight all around vents to keep the cab comfortable no matter the outside temperature. Easy-to-replace air filters eliminate dust and prevents particles from entering the cab.



SERVICING MADE SIMPLE

The 890H boasts a number of **innovations** to make servicing and maintenance faster, easier, and more cost-effective, leaving you time to **focus on your business**.

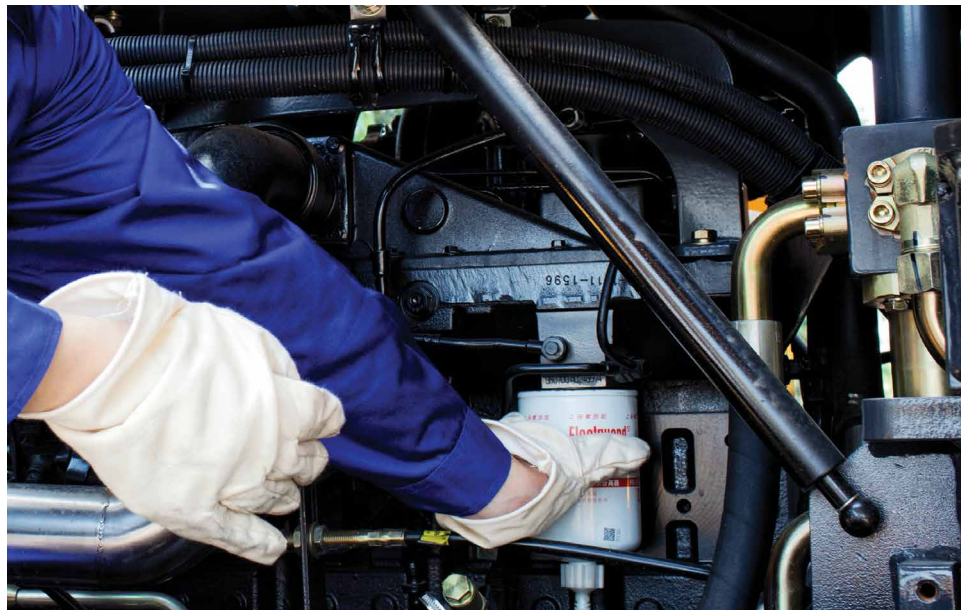
EASY ACCESS

The electrically actuated, wide-opening fiberglass hood of the new 890H gives fast access to the engine and its easy-to-reach service points.

The cab filter has been relocated to the left side of the cab so it can be easily accessed for fast ground level servicing.

The electric control box is situated behind the operator's seat and centralizes all connecting lines allowing for quick reach and easy assessment.

The hydraulic oil gauge is clearly visible from ground level, making visual checks easy and efficient.



AUTOMATIC SYSTEMS

An automatic greasing system maximizes uptime, and the use of the operator-selectable, reversible fan function allows for effective self-cleaning, extending the manual radiator cooling intervals.

SAFE MAINTENANCE

Well-positioned anti-slip tapes and support railings provide superior grip to ensure improved safety for service staff during routine maintenance.



PART OF YOUR PERFORMANCE



We know that **confidence** in your machine and those who support it is essential. So at LiuGong, we make sure we can always get what you need without delay, via our nine global parts depots, and the support of our network of local dealers across 130 countries worldwide.

No matter where you are in the world, we can ensure fast and efficient parts support to keep you going.



Anywhere, and at any time.
That's more than our goal.
That's our pledge.



GENUINE PARTS

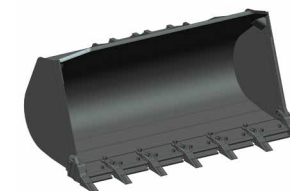
Using genuine LiuGong parts is the key to keeping your running costs low and your machine working in top order. Built for purpose and engineered to work perfectly together, our parts and components are rigorously tested to ensure they can stand up to the demands of all types of work environments.

LiuGong engineering sets high standards and all parts are rigorously tested to ensure they can meet the rigid quality specifications required for long lasting performance.

GET MORE FROM YOUR MACHINE

The new 890H is designed to work with a wide range of attachments to maximize the versatility of your machine. Simple and fast changeover of attachments are made possible thanks to the quick coupler and optimized Z-bar design.

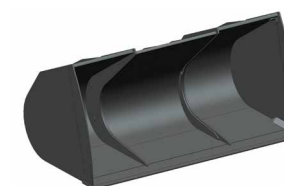
The machine can be equipped with a range of general purpose, rock, grapple and light material buckets to 9.0 m³. Other specialized attachments and grapple give even more choice.



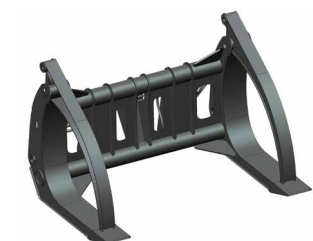
GENERAL PURPOSE



ROCK



LIGHT MATERIAL



**GRAPPLE WITH
ALIGNED TEETH**

MAXIMIZE YOUR RETURN ON INVESTMENT

TRANSMISSION

The 4-speed ZF powershift transmission, including torque converter, provides maximum transfer of power to improve performance and fuel efficiency.

ADVANCED HYDRAULIC SYSTEM

LiuGong's new-generation advanced hydraulic system organizes the mechanical, electrical and hydraulic systems to work in perfect harmony. Power is supplied only as needed, achieving optimum efficiency.

DEPENDABLE POWER

Unmatched performance is driven by the Cummins QSG12 Tier 4 Final Engine - maximizing torque output and delivering more power and breakout force at lower engine speeds.

Z-BAR LINKAGE REINVENTED

Optimized Z-Bar geometry positions the bucket closer to the tires, achieving high bucket breakout forces and stable payload transport with minimal spillage.

AXLES

The hydraulic lock differential axles automatically deliver power to the wheels, increasing traction for optimum performance even in the toughest terrain with the toughest loads.

VERSATILITY

The quick coupler ensures easy and efficient switching between attachments so you get the most productivity from your machine.

ALL ROUND VISIBILITY

The cabs curved front glass design and well positioned loader lift arms provide a broad visibility and easy line of sight to the bucket edge at ground level.



CONTROLS

Kick-down and forward/reverse button are conveniently located on the loader joystick for efficient operator use, reducing cycle times and improving productivity.

AFTER SALES SUPPORT

With over 2,650 outlets, you can feel confident that our dealers and regional offices will be there to support you with training, service and maintenance and expert advice for the life of your machine.

PARTS

Our extensive network of support is always there when you need it, from genuine LiuGong parts to expert service, to maximize your business profitability.



WHERE YOU NEED US WHEN YOU NEED US

LiuGong is committed to providing **reliable** and **tough** equipment combined with dependable service to customers **across the globe**.



We offer local support through our extensive dealer network in more than 130 countries. Our dealers and customers are supported by 10 regional subsidiaries and 9 global parts centers, all offering expert training, parts and service support.

PROFESSIONAL ADVICE

No matter the job, we can help you choose the right machine, with the right specifications, options and attachments for your business. We are committed to ensure maximum uptime and lowest cost of ownership to ensure you get good profitable return from your equipment.



SERVICE AGREEMENTS

At LiuGong, we offer service agreements to support your business needs and help you take control of all your costs. Talk to us today.

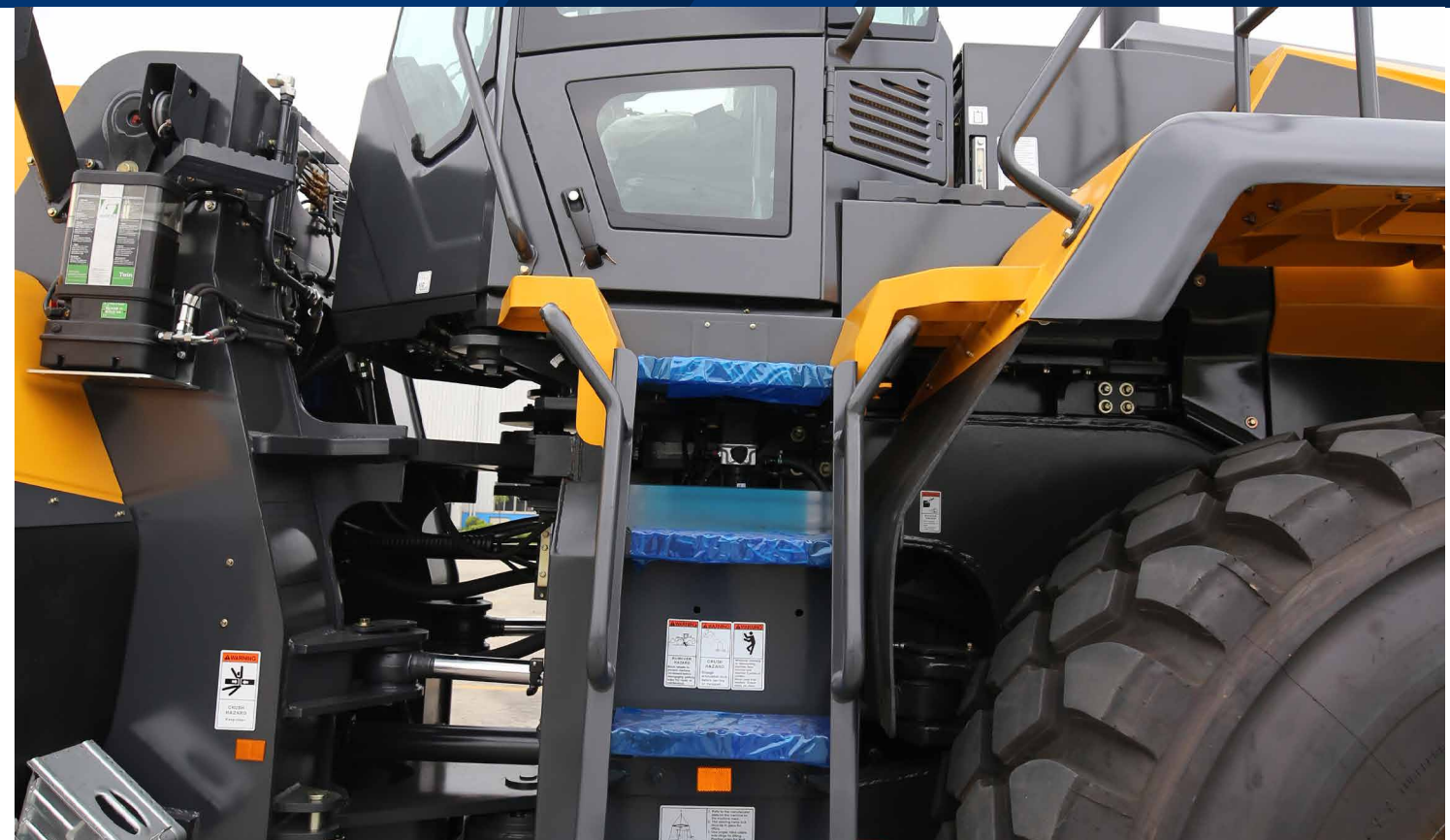


SAFETY WITHOUT COMPROMISE

LiuGong is **committed to your safety** on the jobsite and the 890H wheel loader comes equipped with all the necessary safety features to offer you **peace of mind**.

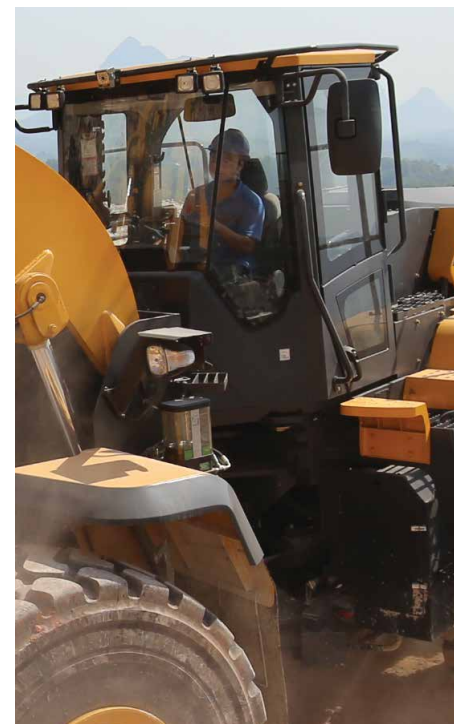


Keep safe when reversing with a rear view camera that keeps an extra eye on the jobsite.



FOPS/ROPS CAB

The 890H comes standard with a Rollover Protection System (ROPS) and Falling Object Protection System (FOPS) for extra peace of mind.



ALL-AROUND VISIBILITY

In addition to the new curved front glass cab, all-around visibility is supported by a rear view camera to help you keep an extra eye on the jobsite. Choice of LED working lights provide even better visibility for low light or night time work.

OPERATOR FRIENDLY

A strong cab seal blocks the ingress of dust and minimizes sound and vibration levels to ensure a comfortable, safe and focused work environment.

SAFE ENTRY

The welded 5-bar steps are non-slip and spaced far enough apart to ensure debris doesn't collect on the steps, but close enough to ensure safe climbing. Well positioned grab handles and platforms make cab access easy and safe.



SPECIFICATIONS

ENGINE		
Description		
<p>Enigne: Cummins, Tier 4 / stage IV-approval, 11.8 liter, 6-cylinder straight turbocharged diesel engine with Common Rail fuel injection system with EGR DPF and SCR Integrated DEF controller. Electric controlled system with high pressure fuel injection ensure maximum fuel efficiency over working cycles. Specially configured and patented performance curve achieve high torque in low speed. Cummins ECM faults inspecting system help you fast response to reduce machine downtime.</p> <p>Air cleaning: Cummins Direct Flow Air Filter</p> <p>Cooling system: Air-to-air intercooler</p> <p>Hydraulic motor drive and Temperature controlled fan.</p>		
Emission regulation	Tier 4 final / Stage IV	
Make	Cummins	
Model	QSG 12	
Gross power	kW	276 @ 2,100 rpm
Net power	kW	262.2 @ 2,100 rpm
Peak torque	N·M	1693
Displacement	L	11.8
Number of cylinders	6	
Aspiration	Turbocharged & Air-to-air intercooled	

HYDRAULIC SYSTEM		
Description		
<p>System supply: Two load-sensing axial piston pumps with variable displacement.The steering function always has priority.</p> <p>Valves: Double-acting 3-spool valve.</p> <p>The main valve is controlled by a 3-spool pilot valve.</p> <p>Lift function: The valve has four positions: lift, hold, lower, and float. Inductive/magnetic automatic boom kick-out can be switched on and off and is adjustable to two positions: bucket at ground level and maximum reach full lifting height.</p> <p>Tilt function: The valve has three functions: rollback, hold and dump.</p> <p>Cylinders: Double-acting cylinders for all functions.</p> <p>Filter: Full-flow filtration through 12 micron (absolute) filter cartridge.</p>		
Main Pump Type	Piston	
Main relief pressure	MPa	26
Raise	s	6.0
Dump time	s	1.6
Float down time	s	3.4
Fastest total cycle time	s	11
Controls	3 levers, finger control	

TRANSMISSION STANDARD		
Description		
<p>Torque converter: single-stage, three elements; free wheel stator; Trasmission: ZF Ergopower 4WG310 countershaft transmission F4/ R3, Electro proportional valve;</p> <p>Gearshifting system: ZF automatic power shift with auto modes (1-4/2-4) all start in gear 2; FNR and kick-down features included; two gearshifting modes of normal modes and speed priority modes.</p> <p>ICCO(Intelligent Clutch Cut Off) perfect fit your loading conditions and save power significantly.The new AEB clutch adjustment in the gearbox ensures fast and smooth gears shift, which result in high level of operator comfort.</p>		
Transmission type	Countershaft, power shift	
Torque converter	Single stage, three elements free wheel stator	
Maximum travel speed, fwd	km/h	38.2
Maximum travel speed, rev	km/h	26.5
Number of speed, fwd	4	
Number of speed, rev	3	

AXLES		
Model	MTL3125 II/MTL3115 II	
Differential front type	Hydraulic lock differential	
Differential rear type	Conventional	
Axle oscillation	°	±11
BRAKES		
Description		
MICO brake solution: Two independent brake circuits, enclosed wet disks.		
Service brake type	Wet disc brake	
Service brake actuation	Hydraulic	
Parking brake type	Mechanical control	
Parking brake actuation	Hydraulic	

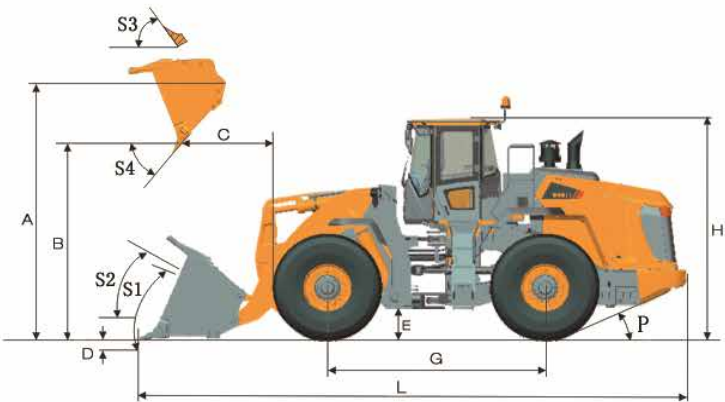
STEERING		
Description		
<p>Steering system: Load-sensing hydraulic articulated steering.</p> <p>System supply: The steering system has priority feed from a load-sensing axial piston pump with variable displacement, dual-pump confluence & steering priority.</p> <p>Steering cylinders: Two double-acting cylinders.</p>		
Steering configuration	Articulated	
Steering relief pressure	MPa	20.7
Steering cylinders	2	
Cylinder bore	mm	100
Rod diameter	mm	60
Stroke	mm	578
Maximum flow	l/min	120
Maximum articulation	°	±38
Smallest turn (over tire)	mm	7011



SPECIFICATIONS

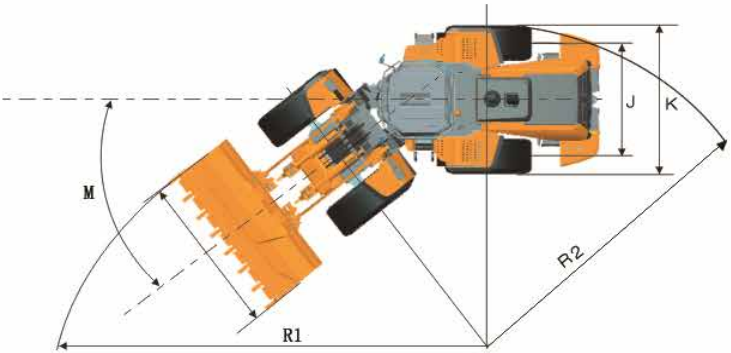
ELECTRICAL SYSTEM		
Description		
Central warning system is a conronic electrical system with central warning light and buzzer for following functions: Serious engine fault, Low steering system pressure, Interruption in communication (computer failure), Low engine oil pressure, High engine oil temperature, High charge-air temperature, Low coolant level, High coolant temperature, Low transmission oil pressure, High transmission oil temperature, Low brake pressure, Engaged parking brake, Brake charging failure, High hydraulic oil temperature		
Voltage	V	24
Batteries	V	2 x 12
Battery capacity	Ah	2 x 120
Cold cranking capacity, approx	A	850
Reserve capacity	min	230
Alternator rating	A	110 A
Starter motor output	kW	8

CAB	
Description	
Instrumentation: all important information is centrally located in the central instrument panel and operator's field of vision.	
Large curved front glass, rear view camera and mirrors ensure great visibility.	
Adjustable steering column, air suspension seat and armrest box, and Denso air conditioning with all-around air outlets providing you the best working environment.	
Pressurized cab with little noise inside.	
The cab is tested and approved according to ROPS (ISO 3471), FOPS (ISO 3449)	



SOUND & ENVIRONMENT			
Sound level in cab - Travel mode (ISO 6396-2008/EN ISO 3744-1995)	dB(A)	75	
Sound level in cab - Stationary Work cycle mode (ISO 6396-2008/EN ISO 3744-1995)	dB(A)	76	
External sound level - Travel mode (ISO 6395-2008)	dB(A)	108	
External sound level - Stationary Work cycle mode (ISO 6395-2008)	dB(A)	109	
Ventilation	m³	9.2	
Heating capacity	kW	5.8	
Air conditioning capacity	kW	6	

DIMENSIONS			
E Ground clearance	mm	476	
G Wheelbase	mm	3,700	
H Cab height	mm	3,765	
J Wheel tread	mm	2,420	
K Width over tires	mm	3,170	
W Width over bucket	mm	3,440	
L Length with bucket down	mm	9,352	
M Turn angle, either side	°	38	
P Rear angle of departure	°	25	
R ₁ Turning radius, bucket carry	mm	7,725	
R ₂ Turning radius, outside of tire	mm	7,011	



LOADER ARM PERFORMANCE WITH ATTACHMENT			
Tipping load – straight	kg	23,878	
Tipping load – full turn	kg	20,600	
Bucket breakout force	kN	245	
A Maximum hinge pin height	mm	4,572	
B Dump clearance at full height discharge	mm	3,330	
C Dump reach at full height discharge	mm	1,479	
D Maximum digging depth, bucket level	mm	142	
S1 Bucket rollback at ground level	°	45	
S2 Bucket rollback at carry	°	49	
S3 Bucket rollback at maximum height	°	62	
S4 Maximum dump angle at full height	°	45	

SERVICE REFILL CAPACITIES			
Fuel tank	L	485	
Engine oil	L	35	
Cooling system	L	45	
Hydraulic system	L	255	
Transmission and torque converter	L	50	
Axles, each	L	65	





SPECIFICATIONS

TIRES

Choosing the right tires for your machine will become a key competitive advantage to achieve outstanding performance. Through close engineering and development cooperation with renowned and carefully selected suppliers, LiuGong can offer a full range of tires specially tailored for wheel loaders.

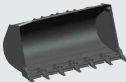
Code	Application	Patterns	Size	PR / *	Tube Type	Width, mm	Overall Diameter, mm	Tread Depth, mm	Load Capacity, 50 km/h / 10 km/h, kg
L3	<ul style="list-style-type: none">In sand operationIn all kinds of load/carry operationThe L3-tread is not as open as L2 and has consequently less self-cleaning		29.5 - 25	28	TL	750	1975	41	12150 / 19000
			29.5 - 25	34	TL	750	1975	41	14000 / 21200
			29.5 - 25	40	TL	750	1975	41	15000 / 23600
			29.5 R 25	**	TL	748	1860	40	14000 / 22400
L4	<ul style="list-style-type: none">In aggressive material such as blast rock where, to some extent, protection against cut damages is demanded		29.5 - 25	28	TL	750	2025	60	12150 / 19000
L5	<ul style="list-style-type: none">In very aggressive material where good protection against cut damage is demanded, e.g. in quarries or mines		29.5 R 25	*	TL	775	1950	100	18000, 10 km/h
			29.5 R 25	**	TL	775	1950	100	22400, 10 km/h

The radial tire-load bearing capacity is indicated by the number of stars (*), in accordance with ISO 4250-2. For the specific radial tire sizes listed in the table above, 2 stars represents the maximum radial tire-load bearing capacity.


ATTACHMENTS

LiuGong attachments with bolt-on or quick-coupler ensure high quality. The integrated design of the system creates a perfect match to achieve superior productivity.

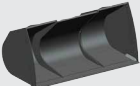
Type	Capacity (m³)	Width (mm)	Height (mm)	Digging Depth (mm)	Dump Clearance (mm)	Dump Reach (mm)	Description
Standard	5.4	3486	1831	125	3330	1479	Anti-wear blade Bolt-on cutting edge Welded teeth
General Purpose	5.0	3494	1777	125	3393	1416	Anti-wear blade Bolt-on teeth
	5.7	3494	1838	125	3329	1479	Anti-wear blade, bolt-on cutting edge and bolt-on teeth
Light Material	6.2	3494	1837	125	2995	1233	Anti-wear blade, bolt-on cutting edge
	6.7	3530	1837	125	3075	1733	Anti-wear blade, bolt-on cutting edge
	7.2	3530	1878	125	3026	1782	Anti-wear blade, bolt-on cutting edge
	9.0	3530	2011	125	3045	1763	Anti-wear blade, bolt-on cutting edge
Rock	4.5	3430	1658	125	3176	1632	Anti-wear blade Bolt-on cutting edge and welded teeth
	6.2	3432	1838	125	3040	1768	Anti-wear blade Bolt-on cutting edge and welded teeth
Grapple	Φ1350	2793	2000	125	2610	1678	Aligned teeth



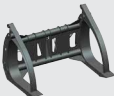
General Purpose



Rock



Light Material



Grapple with Aligned Teeth

STANDARD EQUIPMENT

ENGINE

- Cummins QSG 12, Tier 4F/Stage IV, air-to-air intercooled, 6 cylinders, 4 strokes, single layer radiator.
- EFI (Electric Fuel Injection)
- ECM faults inspecting system
- Pre-filter with waster seperator

TRANSMISSION

- ZF 4WG310 automatic power shift
- Three modes (manual, powerful,efficient)
- ICCO (Intelligent clutch cut-off)
- AEB clutch adjustment
- Kick-down function, FNR, F4/R3
- Remote installing oil filter, oil stick
- Remote pressure taps for check
- Electronic controlled parking brake

AXLE

- ZF MT-L wet axles
- Differentials-front-DHL (differential hydraulic limited), rear conventional
- Wet discs service brake system

HYDRAULIC SYSTEM

- Two piston pumps with variable displacement. Hydraulic load-sensing according to demand. Third port for auxiliary function
- Fingertip levers control, electronic proportional
- Easy simultaneous operating of lift & tilt
- Bucket positioner, automatic
- Lowing the lift boom without engine power

STEERING SYSTEM

- Load sensing system with mature technology of flow amplification and steering priority
- Emergency steering system

TIRE & RIM

- Radial tyre

CHASSIS FRAME

- Crocodile-mouth design with much more service space, stronger and lighter box structure of side plates
- Spacious central articulation arrangement with conic bearing
- Tow hitch
- Each side with rubber cushion stops

LINKAGE & ATTACHMENTS

- Double Z-bar linkage
- Quick coupler
- Full line of attachments, anti-wear blade

ELECTRIC SYSTEM

- Computer board center, integrated electric control box
- Four front headlights on top of cab, LED
- Two rear headlights on top of cab, LED
- Turn signals with flasher
- Batteries, free of maintenance
- Cigarette lighter, 24 V power outlet
- Front and rear windshield wiper
- Alarm, back-up
- Reversing warning light
- Radio/player with USB port

GAUGE GROUP

- Engine coolant temperature
- Transmission oil temperature
- Fuel level
- Hour meter
- Voltage
- Brake oil pressure

INDICATOR GROUP

- Air inlet heater
- Battery charging
- Parking brake applied
- Machine emergency stop
- Power cut-off
- Engine servicing
- Turning signals
- Engine starter running
- High beam of front light

CAB

- Certified FOPS/ROPS cab
- Grammer air suspension seat with armrest
- Adjustable steering column
- Large curved front glass, adhesive
- Rubber cab mounts
- Cab fresh air filter
- One interior & dual exterior rear-view mirrors, display of rearview camera.
- Denso air Conditioner
- Cigarette lighter
- Cab rear windshield defroster
- Sun visor, front & rear
- Fire extinguisher

OPTIONAL EQUIPMENT

ENGINE

- Cold start aid, Eberspacher
- Multistage filters

HYDRAULIC SYSTEM

- Ride control system

TIRE & RIM

- Bias tire
- Full fender
- Tire protective chain
- L5 Pattern

CAB

- Electrical heating air suspension seat
- Electric heater rear mirror

ELECTRIC SYSTEM

- Electrical load weigher
- Front six headlights on top of cab, LED
- Rear headlights on top of cab, LED

LINKAGE & ATTACHMENTS

- Automatic greasing system
- Additional counterweight
- High lift linkage
- Bolt-on wear-resist blade and teeth
- Rock bucket
- Grapple with aligned or crossed teeth



LiuGong Liugong Machinery Co., Ltd

No.1 Liutai Road, Liuzhou, Guangxi, PR China 545007
T: +86 772 388 6124 E: overseas@liugongna.com
www.liugongna.com

Like and follow us:



LG-PB-890H-T4F-IMP-28-102016-ENG

LiuGong series of logos herein, including but not limited to word marks, device marks, letter of alphabet marks and combination marks, as the registered trademarks of Guangxi LiuGong Group Co., Ltd. are used by Guangxi LiuGong Machinery Co., Ltd. with legal permission, and shall not be used without permission. Specifications and designs are subject to change without notice. Illustrations and pictures may include optional equipment and may not include all standard equipment. Equipment and options varies by regional availability.